

ATEC WEIR TYPE CHANNEL

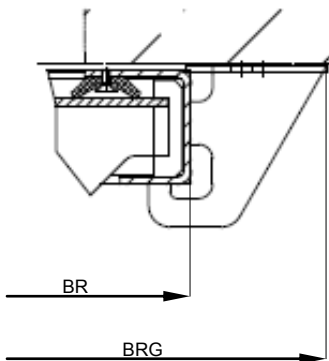
02.40.10.10

PENSTOCK UNITEC

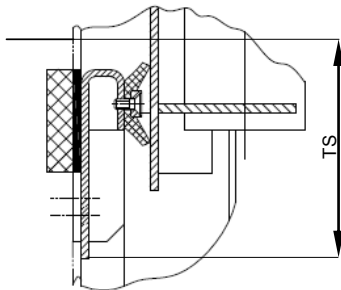
ATEC WEIR TYPE CHANNEL PENSTOCK UNITEC for anchor bolting with straight sill for anchor bolting up to 3000x3000*

Details

SECTION A-A

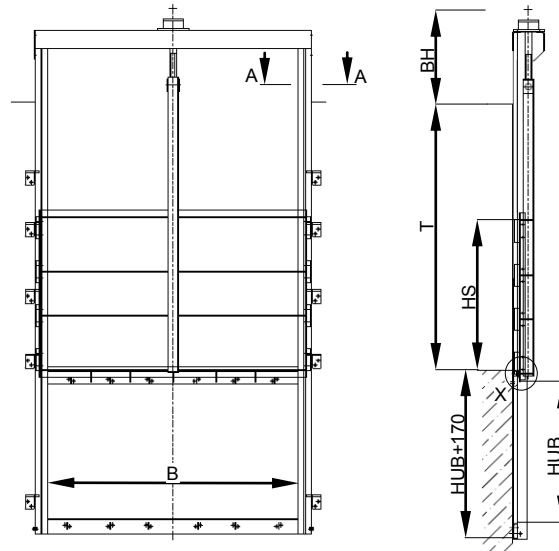
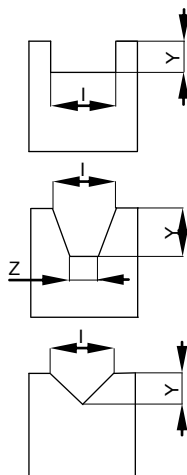


Detail X



Size	BRG	BR	TS
1	B+370	B+150	110
2	B+430	B+180	110
3	B+460	B+180	110

Door cut-outs



Materials

Frame**	Door**	Seal**	Slide skids**	Stem**	Connection Parts**
SS 316	SS 304	Chloroprene	POM	SS 304	A4
SS 304	SS 316	Chloroprene	POM	SS 316	A4

Example for placing an order

ATEC WEIR TYPE CHANNEL PENSTOCK UNITEC for anchor bolting with straight sill for anchor bolting Prod. No. 2.40.10.10

The ATEC WEIR TYPE CHANNEL PENSTOCK can be cut-out at the top of the door in rectangle, trapezoidal or triangle form.

Designed to catalogue sheet

02.40.10.10

Materials***	Dimensions***
Frame:	B x HS: mm
Door:	Channel depth T****: mm
Seal:	Chloroprene Working pressure: mwc or bar
Slide skids:	POM Direction of pressure: V.. R..
Connection parts:	A4 Travel HUB: mm
	Operation height BH: (900)mm
	Door cut-out****: I.. Y.. Z..

* Other dimensions on request.

** Other materials and/or combinations on request

*** Please specify with the enquiry/order.

**** Dimension from penstock invert to upper edge of structure.

***** Detailed description see tender specification.



WEIR TYPE CHANNEL PENSTOCK UNITEC

Double stem type

ATEC WEIR TYPE CHANNEL

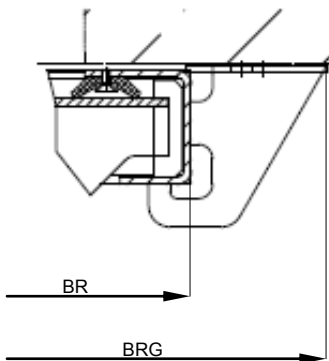
02.45.10.10

PENSTOCK UNITEC

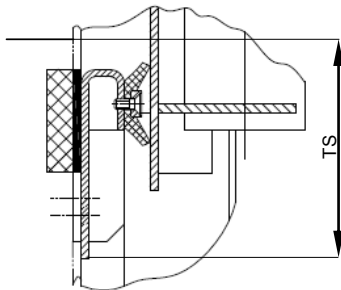
ATEC WEIR TYPE CHANNEL PENSTOCK UNITEC with 2 stems for anchor bolting and straight sill for anchor bolting up to 3000x3000*

Details

Section A-A

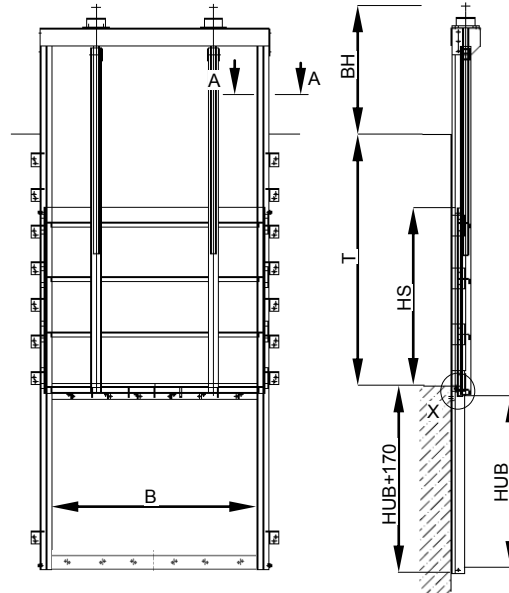
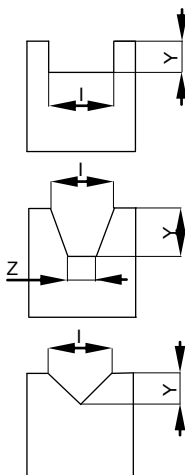


Detail X



Size	BRG	BR	TS
1	B+370	B+150	110
2	B+430	B+180	110
3	B+460	B+180	110

Door cut-outs



Materials

Frame**	Door**	Seal**	Slide skids**	Stem**	Connection Parts**
SS 316	SS 304	Chloroprene	POM	SS 304	A4
SS 304	SS 316	Chloroprene	POM	SS 316	A4

Example for placing an order *****

ATEC WEIR TYPE CHANNEL PENSTOCK UNITEC with 2 stems for anchor bolting with straight sill for anchor bolting Prod. No. 02.45.10.10

The ATEC WEIR TYPE CHANNEL PENSTOCK can be cut-out at the top of the door in rectangle, trapezoidal or triangle form.

Designed to catalogue sheet

02.45.10.10

Materials***		Dimensions***	
Frame:		B x HS:	mm
Door:		Channel depth T****:	mm
Seal:	Chloroprene	Working pressure:	mwc or. bar
Slide skids:	POM	Direction of pressure:	V.. R..
Connection parts:	A4	HUB:	mm
		Operation height BH:	(900)mm
		Door cut-out***:	I.. Y.. Z..

* Other dimensions on request.

** Other materials and/or combinations on request

*** Please specify with the enquiry/order.

**** Dimension from penstock invert to upper edge of structure.

***** Detailed description see tender specification.